



**Middle School Orientation
2022-2023**

"SOARING TO NEW HEIGHTS"

FLEX Middle School Staff

- **Principal - Ms. Johnson**
- **Counselor - Ms. Hill**
- **Office Manager - Ms. Santoni**
- **ELA/Science/6th grade Takeoff teacher - Pruitt**
- **Math/Social Studies/8th grade Takeoff teacher - Morrison**
- **7th grade takeoff teacher - Pruitt/Morrison**
- **PEC specialists - Ms. Mixon and Ms. Love**



How to Soar with FLEX Academy

- **Pick up a chromebook from your base school by Aug. 2nd**
- Have and maintain reliable internet
- Create a designated workspace free of distractions
- Attend all live class sessions and complete all assignments in the learning platform by the due date.
- Camera must be turned on and the student must be visible in the camera during all live sessions
- Mics must be working



FLEX Daily Expectations

- Actively work in each class for at least 45 minutes each day for a total of at least 4-5 hours per day
- Follow your FLEX schedule (highly recommended) or set your own schedule
- Check your school email at least twice per day
- Accept the email invitation from your teachers to join their google classrooms
- Check google classrooms for messages at least once per day



Communication is Key!

- **Please read all communications from FLEX Academy.**
- **Please read all communications from your child's teachers.**
 - Class Dojo
 - Remind
 - Newsletters
 - Emails
 - Progress reports
 - Etc.



- **Please reach out to your child's teachers with any questions in regards to your child. Please allow 24hrs. for a response.**

Attendance

- Attendance is taken by teachers daily
- To be marked present in each class, students must be on target or have actively worked for at least 45 minutes in each class
- Students who accumulate multiple absences will receive attendance warning letters.



Live Take-off Sessions

- All FLEX MS students are required to participate in live take-off sessions via google meets with their teachers every Monday or Tuesday morning.
- This is the time when students receive important information about FLEX, SEL lessons are conducted, and time for them to connect with their homeroom teachers and classmates.



Weekly Live Class Sessions

- **Weekly live sessions are held in each subject area**
 - Monday - ELA
 - Tuesday - Math
 - Wednesday - Science
 - Thursday - Social Studies
 -

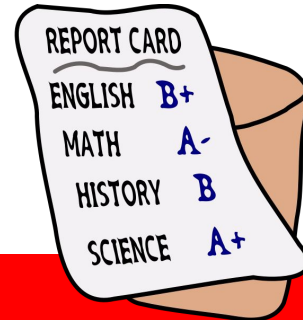
- *** This is a great time for your students to ask questions and receive extra help in their classes.**

- [FLEX Middle School Schedules](#)



Grades

- Grade reports are emailed to parents once per week - please check for these emails - they will come from the homeroom/take-off teacher
- You may also receive a weekly progress report email from Edgenuity
- Grades will be lower if students are behind in their coursework
- Extra credit may be given for active participation in live sessions
- Daily progress can be viewed in Edgenuity and Edmentum



Edgenuity

- Edgenuity/Imagine Learning is the learning platform for all ELA, Math, Science, Social Studies, and SOAR Classes
- <https://www.imaginelearning.com/en/us>
- Students can access their Edgenuity account from the DCSS portal
- Please create a parent account as soon as possible.



Edmentum

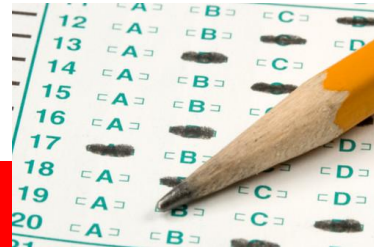
- Edmentum is the learning platform for elective classes.
- <https://www.edmentum.com/>
- Students can access the edmentum icon from their DCSS portal

The Edmentum logo is displayed within a white rectangular frame. The word "edmentum" is written in a bold, black, sans-serif font. A horizontal bar composed of several colored segments (green, yellow, orange, pink, blue, green, orange, pink, green, orange, pink, blue) passes behind the letters. Above the frame, a similar horizontal bar of colored segments is visible. Below the frame, a purple banner contains faint, repeating icons of various educational symbols like a lightbulb, a book, and a graduation cap.

edmentum™

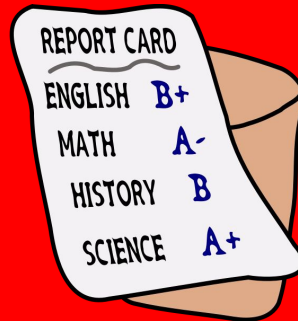
Diagnostic and Standardized Tests

- FLEX students participate in all diagnostic and standardized assessments that are given in the traditional classroom (STAR, Write Score, GA Milestone)
- It is important that all students participate in these assessments as the data gathered helps teachers to plan lessons that will address areas of need
- **All FLEX 6th, 7th, and 8th grade students must report to their base schools for GA Milestone Testing. Please make plans to transport your child for testing. Tests will not be waived and families will not be allowed to opt out of testing this school year.**



Infinite Campus and Grades

- All progress reports and report cards must be viewed in infinite campus
- Please set up an infinite campus account if you have not done so
- Instructions for setting up IC account
- [Parent Tech Training Sessions](#) - Aug. 9th at 6pm and Aug. 11th at 10am



Helpful Websites

www.youtube.com

www.ixl.com

www.khahnacademy.com

www.learnzillion.com

www.studyjams.com

www.brainpop.com

www.newsela.com

www.time4kids.com

Bill Nye The Science Guy

McGraw Hill PreK-12

www.flocabulary.com

www.quizlet.com

FLEX Academy School Counseling Program

- Role of the School Counselor
- Services
- SEL and YouScience
- Need to Contact the School Counselor
 - [Submit a Counselor Referral Form](#)
 - Email: Cheryl.Hill@dcssga.org
 - Phone: (770) 651-2934
 - Website: Coming Soon!





Upcoming Events

Open House - Monday, August 1st - 1:00pm - 4:00pm

Location:

FLEX Academy

3301 Shoals School Rd.

Douglasville, GA 30135

- **We are located on the bottom floor of Factory Shoals Middle School.**
- **The FLEX main entrance is located on the back side of FSMS, please turn in the entrance beside the FSMS gym and drive around to the back parking lot.**

First Day of School

- The first day of school is Wednesday, August 3rd
- All middle school students must log in with their teachers at 8:40am for a “Flight Check” - this meeting will help students to get started and ensure that all students are ready to “Soar to New Heights” in FLEX
- Please be on the lookout for a google meeting link to your email address.

Questions?



Excellence in Online Learning